



# GEOTECHNICAL SERVICES

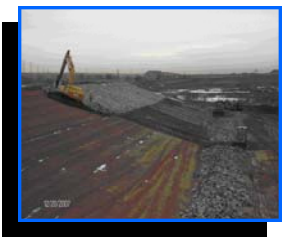
RJH Consultants, Inc. (RJH) is a geotechnical and water resources firm specializing in evaluation, civil design, and construction management for raw water supply systems, dams, reservoirs, and water conveyance infrastructure. Our projects range from small geotechnical explorations to large embankment dam design and construction. We manage projects with overall costs ranging from several thousand dollars to in excess of \$200 million.

RJH performs a variety of geotechnical services for evaluation of existing facilities and design of new facilities. RJH has the ability to complete every phase of a geotechnical project starting with field investigations, through data analyses, and ultimately design of the facility.

Because RJH performs civil design, we understand the project components that are critical to design and can field-tailor explorations and laboratory testing programs to evaluate these items.

RJH completes site investigations and geotechnical analyses to evaluate and obtain information regarding the underlying soil and rock properties. Some of our services include:

- Geologic mapping
- Soil drilling
- Rock coring
- Water pressure testing
- Seepage analysis
- Slope stability analysis
- Geotechnical instrumentation
- Liquefaction triggering analysis
- Bearing capacity
- Earth pressure
- Settlement analysis
- Deformation analysis
- Soil-bentonite slurry trenches design
- Embankment design



## ***RJH Project Experience:*** RJH has completed geotechnical services for a variety of projects such as the following:

*Beebe Draw Reservoir,  
Adams County, CO*

*Lambertson Lakes No. 3 Dam,  
Adams County, CO*

*North Lake Dam,  
Las Animas County, CO*

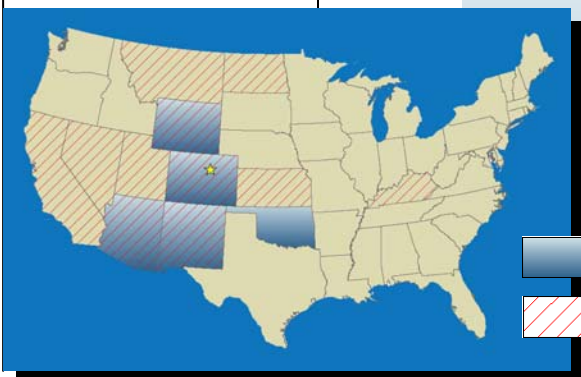
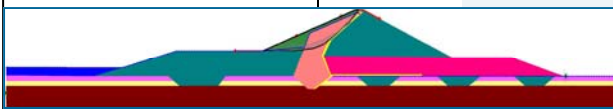
*Rueter-Hess Dam and Reservoir,  
Douglas County, CO*

*Jerry Creek Reservoirs,  
Mesa County, CO*

*Viva Naughton Enlargement Study,  
Lincoln County, WY*

*Canyon Water Tank,  
Douglas County, CO*

*Cabresto Dam Rehabilitation, Taos  
County, NM*



*Project Experience Locations*



*Professional Engineering Registration*

**RJH Consultants, Inc.**  
**9800 Mt. Pyramid Court, Suite 330**  
**Englewood, CO 80112**  
**Phone: 303-225-4611**  
**Fax: 303-225-4615**  
**Toll Free: 866-900-1930**  
[www.rjh-consultants.com](http://www.rjh-consultants.com)